

Schedule 1

Item 1 Description of Agreement Area

A. External boundary description

The agreement area covers all the land and waters subject to Lot 1 on SM10 and Lot 2 on SM9 (Bobby Dazzler Creek Pastoral Holding) within the external boundary of the QUD6230/98 Jangga People (QC98/10) native title determination application, as accepted for registration on 19 October 2004, being that area of those lots west of a line defined as:

Lot 2 on SM9

- Commencing at a point at Longitude 147.489063° East Latitude 20.882476° South, being a point on the eastern boundary of the QUD6230/98 Jangga People (QC98/10) native title determination application, and extending generally south-easterly passing through the following coordinate points:

Longitude ° (East)	Latitude ° (South)
147.511086	20.895803
147.531275	20.908541
147.549622	20.921262
147.566109	20.936257
147.585072	20.950124
147.602206	20.962258
147.615058	20.971501

Lot 1 on SM10

- Entire Lot

Note

Data Reference and source

- Agreement boundary data compiled by National Native Title Tribunal based on data sourced from the Department of Natural Resources and Mines (Qld) (February 2012).
- Native title determination application QUD6230/98 Jangga People (QC98/10) as accepted for registration on 19 October 2004.
- Cadastre data sourced from the Department of Natural Resources and Mines (Qld) (February 2012).

Reference datum

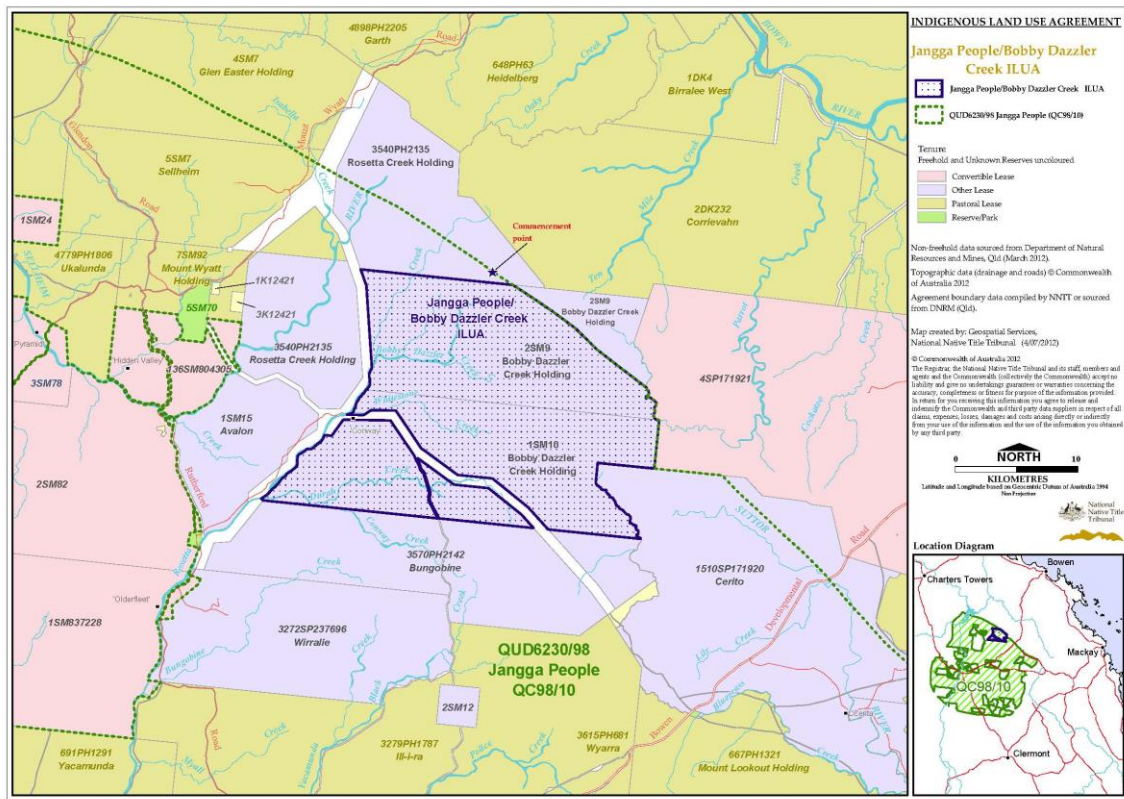
Geographical coordinates have been provided by the NNTT Geospatial Services and are referenced to the Geocentric Datum of Australia 1994 (GDA94), in decimal degrees and are based on the spatial reference data acquired from the various custodians at the time

Use of Coordinates

Where coordinates are used within the description to represent cadastral or topographical boundaries or the intersection with such, they are intended as a guide only. As an outcome to the custodians of cadastral and topographic data continuously recalculating the geographic position of their data based on improved survey and data maintenance procedures, it is not possible to accurately define such a position other than by detailed ground survey.

Prepared by Geospatial Services, National Native Title Tribunal (4 July 2012).

B. Map



Item 3 Description of Lease

Term Lease 0/232178 comprising Lot 2 on CP SM9 and Lot 1 on CP SM10 commonly known as Bobby Dazzler Creek

Item 4 Description of Lessee

Mora Ellen Mason